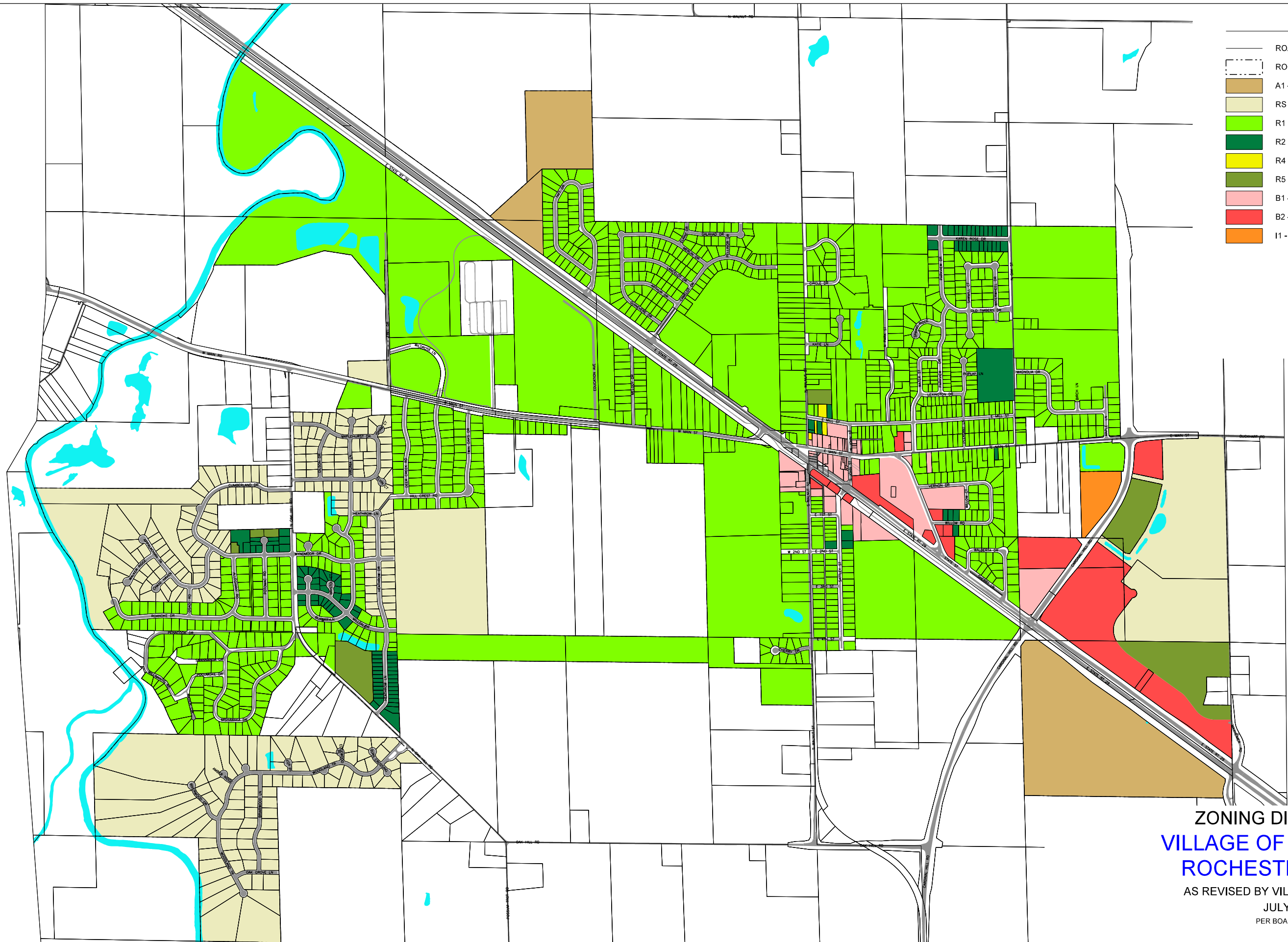
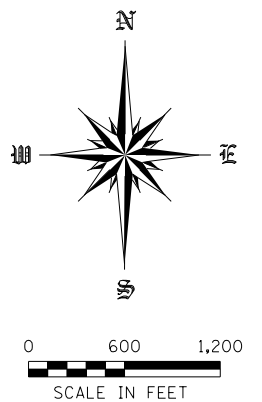


LEGEND

- ROAD R.O.W.
- ROCHESTER CORPORATE LIMITS
- A1 - AGRICULTURAL
- RS - RESIDENTIAL SUBURBAN
- R1 - MEDIUM DENSITY RESIDENTIAL
- R2 - DUPLEX HOUSING RESIDENTIAL
- R4 - MULTIPLE - FAMILY HOUSING
- R5 - MULTIPLE - FAMILY HOUSING
- B1 - GENERAL BUSINESS
- B2 - HIGHWAY AND SERVICE BUSINESS
- I1 - LIGHT INDUSTRIAL



ZONING DISTRICT MAP
VILLAGE OF ROCHESTER
ROCHESTER, ILLINOIS
 AS REVISED BY VILLAGE OF ROCHESTER
 JULY 9, 2018
 PER BOARD APPROVAL

FILE NAME = S:\Maps\Municipal\Rochester\CAD Files\RochZoningMap_2018.dgn
 MODEL = Default
 PLOT DRIVER = Rochester_ZoningMap_PDF_11x17.pltcf9



KUHN & TRELLO
 CONSULTING ENGINEERS
 A Limited Liability Company
 109 N. 7th Street, 10th Floor
 Springfield, IL 62701
 Phone: 217-679-0044
 Professional Design Firm No. 184-006516

USER NAME = pweber	DESIGNED -	DATE	BY	DESCRIPTION
FILE NAME = RochZoningMap_2018.dgn	DRAWN - PW			
PLOT SCALE = 1200.0000" / in.	CHECKED -			
PLOT DATE = 7/12/2018	DATE - 6/27/2018			

REVISIONS	DATE	BY	DESCRIPTION

VILLAGE OF ROCHESTER
ROCHESTER, ILLINOIS

SCALE: 1" = 600'		SHEET NO. OF SHEETS		STA. TO STA.		PROJECT NO. 18011	
						TOTAL SHEETS	SHEET NO.